



Drawer cabinets

Width: 564 mm - Depth: 572 mm



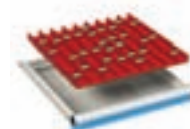
Drawer cabinets
see page 17



Mobile drawer cabinets
see page 25



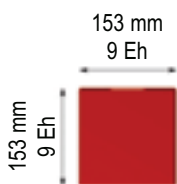
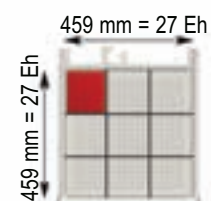
Partitioning material
see page 28



Standard colours:
 Ral 5012 Ral 6011 Ral 7035

5-year Guarantee

For your safety all cabinets must be anchored using floor bolts





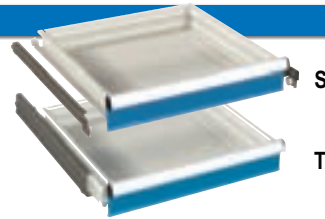
Cabinets housings

Made of high-quality sheet steel. Housing sides and bases are welded and painted with high resistance products, environmentally friendly.

Available in different heights with uprights slotted in increments of 25 mm to allow drawers to be adjusted accordingly. Equipped with central locking system, safety cylinder lock with 2 keys and single drawer opening system.

Width mm	Depth mm	Height mm	Usable height mm	Art. Nr.
564	572	283	200	11-20280
564	572	383	300	11-20380
564	572	533	450	11-20530
564	572	650	550	11-20650
564	572	700	600	11-20700
564	572	800	700	11-20800
564	572	850	750	11-20850
564	572	1000	900	11-21000

Colours: see colour chart at the bottom of the page



Drawers

Made of high-quality sheet steel.

Available in two versions (simple or total extension) with steel roller bearings. All 4 drawer walls are slotted, for custom sub-division using partitioning material. All drawer handles are equipped with aluminium profiles, end caps and labelling strips.

Front height mm	Usable height mm	Lateral height mm	Load capacity kg *	Art. Nr.
50 S	36	33	50	11-23050
75 S	61	52	50	11-23075
75 T	54	52	70	11-23076
100 S	86	77	50	11-23100
100 T	79	77	70	11-23101
125 S	111	77	50	11-23125
125 T	104	77	70	11-23126
150 S	136	127	70	11-23150
150 T	129	127	70	11-23151
200 S	186	177	70	11-23200
200 T	179	177	70	11-23201
250 S	236	177	70	11-23250
250 T	229	177	70	11-23251
300 S	286	277	70	11-23300
300 T	279	277	70	11-23301

S = simple extension: 85 - 90% extension

T = total extension: 100% extension

Colour: Light grey RAL 7035 internal,

for drawer front see colour chart at the bottom of the page

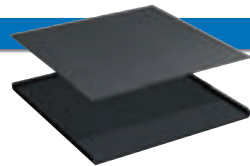


Card insert and cellophane (spare part)

For drawers: 27 Eh

Art. Nr. **06-00275**

Kit: 30 pieces



Upstand raised edges on 3 sides

Made of high-quality steel

Width mm	Depth mm	Height mm	Upstand raised edges on 3-sides Art. Nr.	Smooth rubber mat Art. Nr.
564	572	20	11-20025	-
559	567	3	-	11-20022

Colour: Black



Cabinet bases

Made of high-quality steel

	Depth mm	Height mm	Art. Nr.
1 Base plinth	564	540	05-42605
1 Base plinth	564	540	05-42610
1 Base plinth	564	540	05-42613

Colour: Black



Partitioning material see page 28

Standard colours:

Ral 5012 Ral 6011 Ral 7035



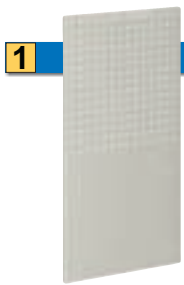


Cabinet housings

Made of high-quality sheet steel. Housing sides and bases are welded with high resistance products, environmentally friendly. Available in 2 different heights with uprights slotted in increments of 25 mm to allow shelves to be adjusted accordingly. Equipped with central locking system, safety cylinder lock with 2 keys and single drawer opening system.

Width mm	Depth mm	Height mm	Usable height mm	Art. Nr.
564	572	850	750	11-20860
564	572	1000	900	11-21010

Colours: see colour chart at the bottom of the page



Perforated back panel

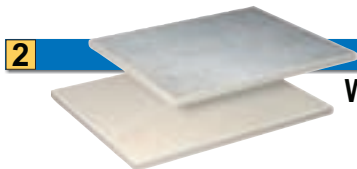
Made of high-quality steel

Width mm	Height mm	Usable height mm	Art. Nr.
564	1104	608	10-20100

Colour: Light grey RAL 7035



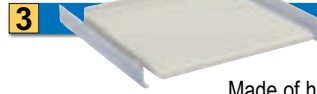
Hooks see page 221



Work surfaces for cabinets

Width mm	Depth mm	Thickness mm	Plastic laminated Art. Nr.	Linoplex Art. Nr.
564	600	28	11-20014	11-20016

Colour: Plastic laminated /linoplex light grey RAL 7035

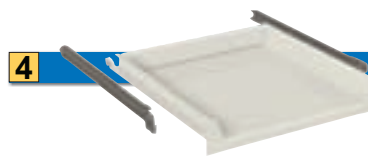


Adjustable shelf

Made of high-quality steel. Lateral supports included

Usable width mm	Usable depth mm	Height mm	Load capacity kg	Art. Nr.
505	467	35	70	11-20028

Colour: Light grey RAL 7035

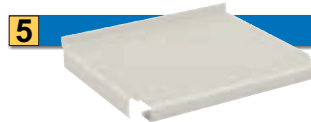


Retractable shelf

Made of high-quality steel

Usable width mm	Usable depth mm	Height mm	Extension %	Load capacity kg	Art. Nr.
434	459	100	85	70	11-23980

Colour: Light grey RAL 7035



Lower shelf

Made of high-quality steel

Usable width mm	Usable depth mm	Height mm	Load capacity kg	Art. Nr.
546	462	55	50	11-20034

Colour: Light grey RAL 7035



Doors for cabinets

Made of high-quality steel

To be fitted to the cabinet, with safety cylinder lock and 2 keys (same number as in the cabinet).

Front height mm	Width mm	Right hand opening Art. Nr.	Left hand opening Art. Nr.
450	508	10-22451	10-22455
600	508	10-22601	10-22605

Colours: see colour chart at the bottom of the page

Standard colours:

Ral 5012 Ral 6011 Ral 7035



i Load capacity is intended for evenly distributed loads

i All components are supplied with fixings

Height: 283 mm



01 11
50 S 50 S
150 S 150 T

Height:	Art. Nr.
283 mm	11-20280-01
	11-20280-11
2 Drawers	



02 12
100 S 100 T
100 S 100 T

Height:	Art. Nr.
283 mm	11-20280-02
	11-20280-12
2 Drawers	



03 13
50 S 50 S
50 S 50 S
100 S 100 T

Height:	Art. Nr.
283 mm	11-20280-03
	11-20280-13
3 Drawers	

Height: 383 mm



01 11
100 S 100 T
200 S 200 T

Height:	Art. Nr.
383 mm	11-20380-01
	11-20380-11
2 Drawers	



02 12
150 S 150 T
150 S 150 T

Height:	Art. Nr.
383 mm	11-20380-02
	11-20380-12
2 Drawers	



03 13
50 S 50 S
100 S 100 T
150 S 150 T

Height:	Art. Nr.
383 mm	11-20380-03
	11-20380-13
3 Drawers	



04 14
75 S 75 T
75 S 75 T
150 S 150 T

Height:	Art. Nr.
383 mm	11-20380-04
	11-20380-14
3 Drawers	



08 18
100 S 100 T
100 S 100 T
100 S 100 T

Height:	Art. Nr.
383 mm	11-20380-08
	11-20380-18
3 Drawers	



05 15
50 S 50 S
50 S 50 S
50 S 50 S
150 S 150 T

Height:	Art. Nr.
383 mm	11-20380-05
	11-20380-15
4 Drawers	



06 16
50 S 50 S
75 S 75 T
75 S 75 T
100 S 100 T

Height:	Art. Nr.
383 mm	11-20380-06
	11-20380-16
4 Drawers	



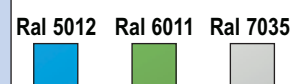
Partitioning material see page 28



Drawers:

S = load capacity: 50/70 kg - extension 85-90%
T = load capacity: 70 kg - extension 100%

Standard colours:





Height: 533 mm



01 11
 50 S 50 S
 75 S 75 T
 125 S 125 T
 200 S 200 T

Height:	Art. Nr.
533 mm	11-20530-01
	11-20530-11
4 Drawers	



02 12
 50 S 50 S
 75 S 75 T
 75 S 75 T
 100 S 100 T
 150 S 150 T

Height:	Art. Nr.
533 mm	11-20530-02
	11-20530-12
5 Drawers	



03 13
 50 S 50 S
 50 S 50 S
 75 S 75 T
 75 S 75 T
 100 S 100 T
 100 S 100 T

Height:	Art. Nr.
533 mm	11-20530-03
	11-20530-13
6 Drawers	

Height: 650 mm



01 11
 100 S 100 T
 150 S 150 T
 300 S 300 T

Height:	Art. Nr.
650 mm	11-20650-01
	11-20650-11
3 Drawers	



07 17
 100 S 100 T

 RS S RS S

Height:	Art. Nr.
650 mm	11-20650-07
	11-20650-17
1 Drawer	
1 Retractable shelf	
1 Door 450mmh right hand opening	

Standard colours:

Ral 5012 Ral 6011 Ral 7035



Drawers:

S = load capacity: 50/70 kg -extension 85-90%
T = load capacity: 70 kg - extension 100%

Height: 700 mm



01 11
75 S 75 T
100 S 100 T
125 S 125 T
300 S 300 T

Height:	Art. Nr.
700 mm	11-20700-01
	11-20700-11
4 Drawers	



08 18
100 S 100 T
150 S 150 T
150 S 150 T
200 S 200 T

Height:	Art. Nr.
700 mm	11-20700-08
	11-20700-18
4 Drawers	



02 12
75 S 75 T
75 S 75 T
100 S 100 T
150 S 150 T
200 S 200 T

Height:	Art. Nr.
700 mm	11-20700-02
	11-20700-12
5 Drawers	



03 13
50 S 50 S
75 S 75 T
75 S 75 T
100 S 100 T
100 S 100 T
200 S 200 T

Height:	Art. Nr.
700 mm	11-20700-03
	11-20700-13
6 Drawers	



04 14
50 S 50 S
50 S 50 S
75 S 75 T
75 S 75 T
75 S 75 T
75 S 75 T
200 S 200 T

Height:	Art. Nr.
700 mm	11-20700-04
	11-20700-14
7 Drawers	



05 15
75 S 75 T
75 S 75 T

RS S RS S

Height:	Art. Nr.
700 mm	11-20700-05
	11-20700-15
2 Drawers	
1 Retractable shelf	
1 Door 450mmh right hand opening	



06

AS

RS S

Height:	Art. Nr.
700 mm	11-20700-06
1 Adjustable shelf	
1 Retractable shelf	
1 Door 600mmh right hand opening	



Partitioning material see page 28


Standard colours:

Ral 5012 Ral 6011 Ral 7035






Height: 800 mm



10	21
100 S	100 T
100 S	100 T
200 S	200 T
300 S	300 T

Height:	Art. Nr.
800 mm	11-20800-10
	11-20800-21


4 Drawers



01	11
50 S	50 S
100 S	100 T
100 S	100 T
150 S	150 T
300 S	300 T

Height:	Art. Nr.
800 mm	11-20800-01
	11-20800-11


5 Drawers



02	12
75 S	75 T
75 S	75 T
100 S	100 T
100 S	100 T
150 S	150 T
200 S	200 T

Height:	Art. Nr.
800 mm	11-20800-02
	11-20800-12


6 Drawers



03	13
50 S	50 S
100 S	100 T
100 S	100 T
100 S	100 T
150 S	150 T
200 S	200 T

Height:	Art. Nr.
800 mm	11-20800-03
	11-20800-13

6 Drawers



04	14
50 S	50 S
75 S	75 T
75 S	75 T
100 S	100 T
100 S	100 T
150 S	150 T
150 S	150 T

Height:	Art. Nr.
800 mm	11-20800-04
	11-20800-14

7 Drawers



07	17
100 S	100 T
AS	AS
RS S	RS S

Height:	Art. Nr.
800 mm	11-20800-07
	11-20800-17

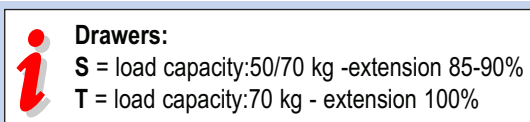
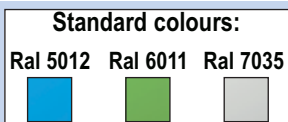
1 Drawer
 1 Adjustable shelf
 1 Retractable shelf
 1 Door 600mmh right hand opening



06	16
100 S	100 T
150 S	150 T
RS	RS

Height:	Art. Nr.
800 mm	11-20800-06
	11-20800-16

2 Drawers
 1 Retractable shelf
 1 Door 450mmh right hand opening



Height: 850 mm



08 18
 100 S 100 T
 150 S 150 T
 200 S 200 T
 300 S 300 T

Height:	Art. Nr.
850 mm	11-20850-08
	11-20850-18
4 Drawers	



01 11
 50 S 50 S
 100 S 100 T
 100 S 100 T
 200 S 200 T
 300 S 300 T

Height:	Art. Nr.
850 mm	11-20850-01
	11-20850-11
5 Drawers	



02 12
 75 S 75 T
 100 S 100 T
 100 S 100 T
 100 S 100 T
 125 S 125 T
 250 S 250 T

Height:	Art. Nr.
850 mm	11-20850-02
	11-20850-12
6 Drawers	



03 13
 75 S 75 T
 75 S 75 T
 100 S 100 T
 100 S 100 T
 100 S 100 T
 150 S 150 T
 150 S 150 T

Height:	Art. Nr.
850 mm	11-20850-03
	11-20850-13
7 Drawers	



04 14
 50 S 50 S
 75 S 75 T
 75 S 75 T
 75 S 75 T
 75 S 75 T
 100 S 100 T
 100 S 100 T
 200 S 200 T

Height:	Art. Nr.
850 mm	11-20850-04
	11-20850-14
8 Drawers	



06 16
 150 S 150 T

 AS AS

 RS S RS S

Height:	Art. Nr.
850 mm	11-20850-06
	11-20850-16
1 Drawer 1 Adjustable shelf 1 Retractable shelf 1 Door 600mmh right hand opening	



07 17
 100 S 100 T
 200 S 200 T

RS S RS S

Height:	Art. Nr.
850 mm	11-20850-07
	11-20850-17
2 Drawers 1 Retractable shelf 1 Door 450mmh right hand opening	



05 15
 50 S 50 S
 100 S 100 T
 150 S 150 T

RS S RS S

Height:	Art. Nr.
850 mm	11-20850-05
	11-20850-15
3 Drawers 1 Retractable shelf 1 Door 450mmh right hand opening	



Partitioning material see page 28

Standard colours:

Ral 5012 Ral 6011 Ral 7035





Standard examples:

Height: 1000 mm



01 11
 75 S 75 T
 75 S 75 T
 100 S 100 T
 150 S 150 T
 200 S 200 T
 300 S 300 T

Height:	Art. Nr.
1000 mm	11-21000-01
	11-21000-11

6 Drawers



02 12
 100 S 100 T
 100 S 100 T
 100 S 100 T
 100 S 100 T
 150 S 150 T
 150 S 150 T
 200 S 200 T

Height:	Art. Nr.
1000 mm	11-21000-02
	11-21000-12

7 Drawers



03 13
 50 S 50 S
 75 S 75 T
 75 S 75 T
 75 S 75 T
 125 S 125 T
 150 S 150 T
 150 S 150 T
 200 S 200 T

Height:	Art. Nr.
1000 mm	11-21000-03
	11-21000-13

8 Drawers



04 14
 50 S 50 S
 75 S 75 T
 50 S 50 S
 75 S 75 T
 75 S 75 T
 75 S 75 T
 125 S 125 T
 150 S 150 T
 300 S 300 T

Height:	Art. Nr.
1000 mm	11-21000-04
	11-21000-14

8 Drawers



05 15
 50 S 50 S
 100 S 100 T
 150 S 150 T

 AS AS

 RS S RS S

Height:	Art. Nr.
1000 mm	11-21000-05
	11-21000-15

3 Drawers
 1 Adjustable shelf
 1 Retractable shelf
 1 Door 600mmh right hand opening



06 16
 50 S 50 S
 75 S 75 T
 75 S 75 T
 100 S 100 T
 150 S 150 T

 RS S RS S

Height:	Art. Nr.
1000 mm	11-21000-06
	11-21000-16

5 Drawers
 1 Retractable shelf
 1 Door 450mmh right hand opening

Standard colours:

Ral 5012 Ral 6011 Ral 7035



Partitioning material see page 28



Drawers:

S = load capacity:50/70 kg -extension 85-90%
 T = load capacity:70 kg - extension 100%



Mobile cabinets

Made of high-quality sheet steel. Housing sides and bases are welded and painted with high resistance products, environmentally friendly.

Available in different heights with uprights slotted in increments of 25 mm to allow drawers to be adjusted accordingly. Complete with safety upstand raised edges on 4 sides, rubber mat, handle and pair of castors (2 swivel braked and 2 fixed) in nylon or rubber.

Equipped with central locking system, safety cylinder lock with 2 keys and single drawer opening system.

Width 557 mm, Depth 627 mm.

with Nylon castors Ø 100 mm Art. Nr.	with Rubber castors Ø 100 mm Art. Nr.	Total height mm	with Rubber castors Ø 150 mm Art. Nr.	Total height mm	Usable height for drawers mm
11-29530	11-29540	705	11-29550	762	450
11-29650	11-29660	822	11-29670	879	550
11-29700	11-29710	872	11-29720	929	600
11-29800	11-29810	972	11-29820	1029	700
11-29850	11-29860	1022	11-29870	1079	750
11-29900	11-29910	1172	11-29920	1229	900

Max load capacity: 400 kg with load evenly distributed

Colours: see colour chart at the bottom of the page



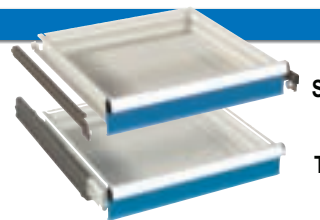
2 fixed and
2 swivel braked
Nylon castors



2 fixed and
2 swivel braked
Rubber castors



**Replacement lock with
2 keys**
Art.Nr. 06-99110



Drawers

Made of high-quality sheet steel.

Available in two versions (simple or total extension) with steel roller bearings. All 4 drawer walls are slotted, for custom sub-division using partitioning material. All drawer handles are equipped with aluminium profiles, end caps and labelling strips.

Front height mm	Usable height mm	Lateral height mm	Load capacity kg *	Single locking system on right Art. Nr.
50 S	36	33	50	11-23052
75 S	61	52	50	11-23077
75 T	54	52	50	11-23078
100 S	86	77	50	11-23102
100 T	79	77	50	11-23103
125 S	111	77	50	11-23127
125 T	104	77	50	11-23128
150 S	136	127	50	11-23152
150 T	129	127	50	11-23153
200 S	186	177	50	11-23202
200 T	179	177	50	11-23203
250 S	236	177	50	11-23252
250 T	229	177	50	11-23253
300 S	286	277	50	11-23302
300 T	279	277	50	11-23303

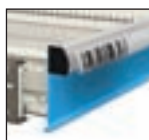
S = simple extension: 85 - 90% extension

T = total extension: 100% extension

* with load evenly distributed and at least one slotted divider in the middle

Colour: Light grey RAL 7035 internal,

for drawer front see colour chart at the bottom of the page



Card insert and cellophane (spare part)

For drawers: 27 Eh

Art. Nr. **06-00275**

Kit: 30 pieces



All drawers with
single locking
system on right



Load capacity is intended
for evenly distributed
loads

Standard colours:

Ral 5012



Ral 6011



Ral 7035





Series 11

27x27 Eh

Standard examples:

Height: 705 mm



01	11
50 S	50 S
75 S	75 T
125 S	125 T
200 S	200 T

Height:	Art. Nr.
705 mm	11-29530-01
	11-29530-11

4 Drawers with single locking system on right
4-sided safety upstand with rubber mat



02	12
50 S	50 S
75 S	75 T
100 S	100 T
150 S	150 T

Height:	Art. Nr.
705 mm	11-29530-02
	11-29530-12

5 Drawers with single locking system on right
4-sided safety upstand with rubber mat



03	13
50 S	50 S
50 S	50 S
75 S	75 T
75 S	75 T
100 S	100 T
100 S	100 T

Height:	Art. Nr.
705 mm	11-29530-03
	11-29530-13

6 Drawers with single locking system on right
4-sided safety upstand with rubber mat

Height: 822 mm



01	11
100 S	100 T
150 S	150 T
300 S	300 T

Height:	Art. Nr.
822 mm	10-29650-01
	10-29650-11

3 Drawers with single locking system on right
4-sided safety upstand with rubber mat



02	12
50 S	50 S
50 S	50 S
75 S	75 T
75 S	75 T
150 S	150 T
150 S	150 T

Height:	Art. Nr.
822 mm	10-29650-02
	10-29650-12

6 Drawers with single locking system on right
4-sided safety upstand with rubber mat

i For your safety all mobile cabinet drawers have a max load capacity of 70kg* (*with load evenly distributed)

Height: 872 mm



01	11
75 S	75 T
100 S	100 T
125 S	125 T
300 S	300 T

Height:	Art. Nr.
872 mm	11-29700-01
	11-29700-11

4 Drawers with single locking system on right
4-sided safety upstand with rubber mat



02	12
75 S	75 T
75 S	75 T
100 S	100 T
150 S	150 T
200 S	200 T

Height:	Art. Nr.
872 mm	11-29700-02
	11-29700-12

5 Drawers with single locking system on right
4-sided safety upstand with rubber mat



03	13
50 S	50 S
75 S	75 T
75 S	75 T
100 S	100 T
100 S	100 T
200 S	200 T

Height:	Art. Nr.
872 mm	11-29700-03
	11-29700-13

6 Drawers with single locking system on right
4-sided safety upstand with rubber mat

Standard colours:

Ral 5012 Ral 6011 Ral 7035



All drawers with single locking system on right



Drawers:

S = load capacity:50 kg - extension 85-90%
T = load capacity:50 kg - extension 100%

Height: 972 mm



01 11
50 S 50 S
100 S 100 T
100 S 100 T
150 S 150 T
300 S 300 T

Height:	Art. Nr.
972 mm	11-29800-01
	11-29800-11

5 Drawers with single locking system on right
4-sided safety upstand with rubber mat



02 12
75 S 75 T
75 S 75 T
100 S 100 T
100 S 100 T
150 S 150 T
200 S 200 T

Height:	Art. Nr.
972 mm	11-29800-02
	11-29800-12

6 Drawers with single locking system on right
4-sided safety upstand with rubber mat



03 13
50 S 50 S
100 S 100 T
100 S 100 T
100 S 100 T
150 S 150 T
200 S 200 T

Height:	Art. Nr.
972 mm	11-29800-03
	11-29800-13

6 Drawers with single locking system on right
4-sided safety upstand with rubber mat

Height: 1022 mm



01 11
50 S 50 S
100 S 100 T
100 S 100 T
200 S 200 T
300 S 300 T

Height:	Art. Nr.
1022 mm	11-29850-01
	11-29850-11

5 Drawers with single locking system on right
4-sided safety upstand with rubber mat



02 12
75 S 75 T
100 S 100 T
100 S 100 T
100 S 100 T
125 S 125 T
250 S 250 T

Height:	Art. Nr.
1022 mm	11-29850-02
	11-29850-12

6 Drawers with single locking system on right
4-sided safety upstand with rubber mat



03 13
75 S 75 T
75 S 75 T
100 S 100 T
100 S 100 T
100 S 100 T
150 S 150 T
150 S 150 T

Height:	Art. Nr.
1022 mm	11-29850-03
	11-29850-13

7 Drawers with single locking system on right
4-sided safety upstand with rubber mat

Height: 1172 mm



01 11
75 S 75 T
75 S 75 T
100 S 100 T
150 S 150 T
200 S 200 T
300 S 300 T

Height:	Art. Nr.
1172 mm	11-29900-01
	11-29900-11

6 Drawers with single locking system on right
4-sided safety upstand with rubber mat



02 12
100 S 100 T
100 S 100 T
100 S 100 T
100 S 100 T
150 S 150 T
150 S 150 T
200 S 200 T

Height:	Art. Nr.
1172 mm	11-29900-02
	11-29900-12

7 Drawers with single locking system on right
4-sided safety upstand with rubber mat



03 13
50 S 50 S
75 S 75 T
75 S 75 T
75 S 75 T
125 S 125 T
150 S 150 T
150 S 150 T
200 S 200 T

Height:	Art. Nr.
1172 mm	11-29900-03
	11-29900-13

8 Drawers with single locking system on right
4-sided safety upstand with rubber mat



Partitioning material see page 28

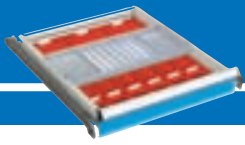


Standard examples are equipped with 2 fixed and 2 swivel braked Nylon castors, Ø 100 mm

Standard colours:

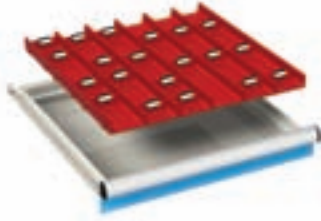
Ral 5012 Ral 6011 Ral 7035



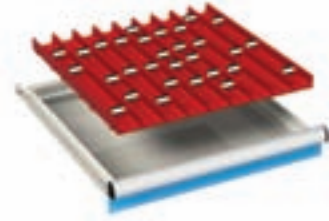


Standard examples:

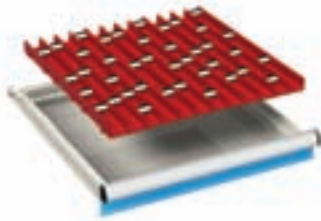
Partitioning material



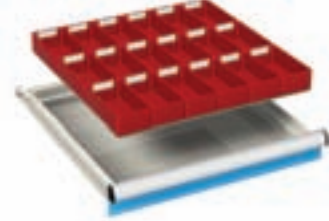
For front height:	Art. Nr.
50 mm and higher	08-20002
9 Troughs	2-Trough
20 Trough dividers	



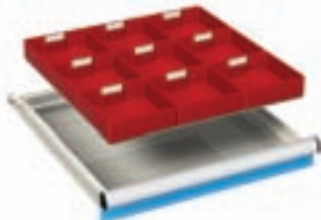
For front height:	Art. Nr.
50 mm and higher	08-20003
9 Troughs	3-Trough
30 Trough dividers	



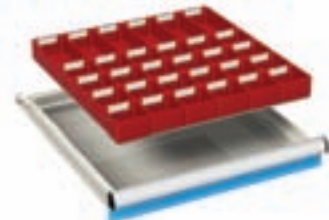
For front height:	Art. Nr.
50 mm and higher	08-20004
9 Troughs	4-Trough
40 Trough dividers	



For front height:	Art. Nr.
50 mm	08-21105
75 mm	08-21107
100 mm	08-21110
18 Plastic boxes	150x75 mm

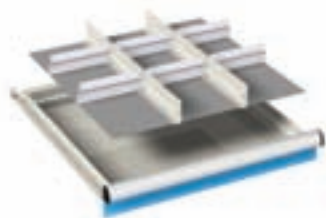


For front height:	Art. Nr.
50 mm	08-21205
75 mm	08-21207
100 mm	08-21210
9 Plastic boxes	150x150 mm



For front height:	Art. Nr.
50 mm	08-21305
75 mm	08-21307
24 Plastic boxes	75x75 mm
6 Plastic boxes	150x75 mm

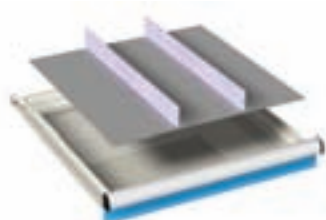
Standard examples:



For front height:	Art. Nr.
50 mm	08-23205
75 mm	08-23207
100-125 mm	08-23210
150 mm	08-23215
200-250 mm	08-23220
300 mm	08-23230
2 Slotted partitions	27 Eh
6 Aluminium dividers	9 Eh



For front height:	Art. Nr.
50 mm	08-23305
75 mm	08-23307
100-125 mm	08-23310
150 mm	08-23315
3 Slotted partitions	27 Eh
9 Aluminium dividers	6 Eh
2 Aluminium dividers	9 Eh



For front height:	Art. Nr.
50 mm	08-38205
75 mm	08-38207
100-125 mm	08-38210
150 mm	08-38215
200-250 mm	08-38220
2 Plain partitions	27 Eh

