



Series 30



Tool trolleys

Made of high-quality sheet steel. Trolleys are painted with high resistance products, environmentally friendly. The sides are slotted in increments of 25 mm to allow tool holder frames, tool cradles and other components to be adjusted accordingly. Fitted with handle and pair of rubber castors, Ø 150 mm.

Width mm	Depth mm	Height mm	Load capacity kg *	Art. Nr.
765	508	880	500	30-10100

* with load evenly distributed

Colours: see colour chart at the bottom of the page



2 fixed and
2 swivel braked
Rubber castors



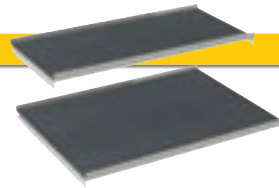
Protection bars



Made of high-quality steel. To be fixed between perforated sides of the trolley. Fixing hardware included.

Width mm	Height mm	Pair Art. Nr.
600	270	30-10428

Colour: Light grey RAL 7035



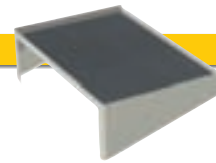
Adjustable shelves

Made of high-quality steel with rubber mat

To be fixed between the perforated sides of the trolley.

Usable width mm	Usable depth mm	Height mm	Load capacity kg	Art. Nr.
600	305	30	50	30-10407
600	465	30	50	30-10411

Shelf colour: Light grey RAL 7035 / Rubber mat: Black



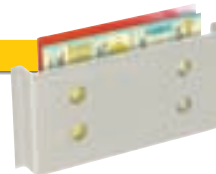
Fixed shelf

Made of high-quality steel with rubber mat

To be fixed between the perforated sides of the trolley.

Usable width mm	Usable depth mm	Height mm	Load capacity kg	Art. Nr.
496	312	30	20	30-10207

Shelf colour: Light grey RAL 7035 / Rubber mat: Black



Document pocket

Made of high-quality steel

Used to store documents, can be fitted to both perforated sides.

Width mm	Depth mm	Height mm	Size DIN	Art. Nr.
370	46	180	A4	30-10418

Colour: Light grey RAL 7035

Standard colours:

Ral 5012 Ral 6011 Ral 7035



i Load capacity is intended for evenly distributed loads



Tool cradles
Made of high-quality steel

To store tool holders. 2-types available (with handle and without handle), fitted to the perforated sides of the trolley using cradle supports.

A Tool cradle

Width mm	Height mm	Depth mm	without Handles Art. Nr.	with Handles Art. Nr.
562	135	155	30-41360	30-41361
562	95	155	30-41362	30-41363

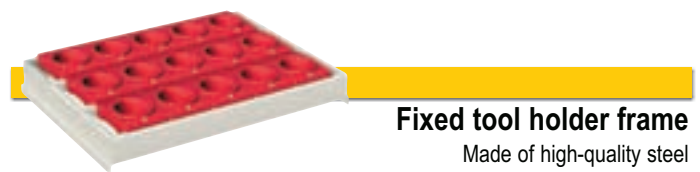
Colour: Light grey RAL 7035

Made of steel. Fitted to the perforated sides of the trolley.

B Cradle support, pair

	Art. Nr.
Horizontal	30-44180
Angled, 20°	30-44181

Colour: Light grey RAL 7035



Fixed tool holder frame
Made of high-quality steel

To be fixed to the perforated sides of the trolley (supports included) Fixing hardware included.

Fixed tool holder frame

Width mm	Depth mm	Height mm	No. of rows	Art. Nr.
584	447	80	3	30-45336

Colour: Light grey RAL 7035



Tool holders see
page 175



All components are
supplied with fixings



Series 30



Size: 1077x508x880 mm	Art. Nr.
without Tool holders	30-10100-10
with 32 Tool holders ISO-SK30	30-10100-13
with 32 Tool holders ISO-SK40	30-10100-14
with 20 Tool holders ISO-SK50	30-10100-15
with 24 Tool holders VDI 40	30-10100-16
with 32 Tool holders HSK 50	30-10100-17
with 24 Tool holders HSK 63	30-10100-18
Fittings:	
1 Fixed shelf with rubber mat	
4 Tool cradles and 4 angled supports	



Size: 1077x508x880 mm	Art. Nr.
without Tool holders	30-10100-20
with 24 Tool holders ISO-SK30	30-10100-23
with 24 Tool holders ISO-SK40	30-10100-24
with 15 Tool holders ISO-SK50	30-10100-25
with 18 Tool holders VDI 40	30-10100-26
with 24 Tool holders HSK 50	30-10100-27
with 18 Tool holders HSK 63	30-10100-28
Fittings:	
1 Fixed shelf with rubber mat	
3 Tool cradles and 3 horizontal supports	
1 Adjustable shelf with rubber mat	



Size: 1077x508x880 mm	Art. Nr.
without Tool holders	30-10100-50
with 24 Tool holders ISO-SK30	30-10100-53
with 24 Tool holders ISO-SK40	30-10100-54
with 15 Tool holders ISO-SK50	30-10100-55
with 18 Tool holders VDI 40	30-10100-56
with 24 Tool holders HSK 50	30-10100-57
with 18 Tool holders HSK 63	30-10100-58
Fittings:	
1 Fixed shelf with rubber mat	
1 Fixed tool holder frame 3-rows	



Size: 1077x508x880 mm	Art. Nr.
without Tool holders	30-10100-60
with 32 Tool holders ISO-SK30	30-10100-63
with 32 Tool holders ISO-SK40	30-10100-64
with 20 Tool holders ISO-SK50	30-10100-65
with 24 Tool holders VDI 40	30-10100-66
with 32 Tool holders HSK 50	30-10100-67
with 24 Tool holders HSK 63	30-10100-68
Fittings:	
1 Fixed shelf with rubber mat	
1 Fixed tool holder frame 3-rows	
1 Tool cradle and 1 angled support	

Standard colours:

Ral 5012 Ral 6011 Ral 7035



Standard examples:



Size: 1077x508x880 mm	Art. Nr.
without Tool holders	30-10100-70
with 40 Tool holders ISO-SK30	30-10100-73
with 40 Tool holders ISO-SK40	30-10100-74
with 25 Tool holders ISO-SK50	30-10100-75
with 30 Tool holders VDI 40	30-10100-76
with 40 Tool holders HSK 50	30-10100-77
with 30 Tool holders HSK 63	30-10100-78

Fittings:

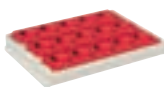
- 1 Fixed shelf with rubber mat
- 1 Fixed tool holder frame 3-rows
- 2 Tool cradles and 2 angled supports



Size: 1077x508x880 mm	Art. Nr.
without Tool holders	30-10100-80
with 56 Tool holders ISO-SK30	30-10100-83
with 56 Tool holders ISO-SK40	30-10100-84
with 35 Tool holders ISO-SK50	30-10100-85
with 42 Tool holders VDI 40	30-10100-86
with 56 Tool holders HSK 50	30-10100-87
with 42 Tool holders HSK 63	30-10100-88

Fittings:

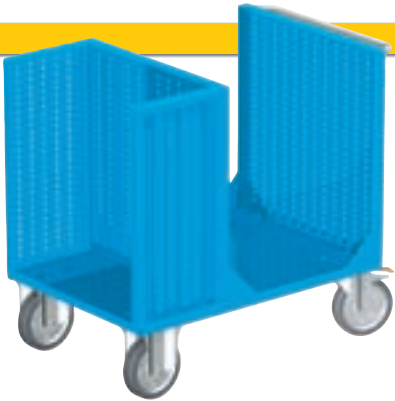
- 1 Fixed shelf with rubber mat
- 1 Fixed tool holder frame 3-rows
- 4 Tool cradles and 4 angled supports



Tool type	RED Art. Nr..	No. of tools per tool holder	No. of tools per cradle Art. Nr. 30-41360	No. of tools per frame Art. Nr. 30-45336
ISO-SK 25	30-51025	4	5	15
ISO-SK 30	30-51030	1	8	24
ISO-SK 40	30-51040	1	8	24
ISO-SK 45	30-51045	1	6	18
ISO-SK 50	30-51050	1	5	15
HSK 32	30-51432	1	8	24
HSK 40	30-51440	1	8	24
HSK 50	30-51450	1	8	24
HSK 63	30-51463	1	8	24
HSK 80	30-51480	1	6	18
HSK 100	30-51499	1	5	15
CAPTO C3	30-51603	4	4	12
CAPTO C4	30-51604	1	8	24
CAPTO C5	30-51605	1	8	24
CAPTO C6	30-51606	1	7	21
CAPTO C8	30-51608	1	6	18
VDI 20	30-51120	1	8	24
VDI 30	30-51130	1	8	24
VDI 40	30-51140	1	8	24
VDI 50	30-51150	1	6	18
VDI 60	30-51160	1	5	15
58 mm	30-50058	-	8	24
65 mm	30-50065	-	8	24
75 mm	30-50075	-	7	21
87 mm	30-50087	-	6	18
105 mm	30-50105	-	5	15
120 mm	30-50120	-	4	12



Series 30



Tool trolleys

Made of high-quality sheet steel. Trolley sides and bases are welded and painted with high resistance products, environmentally friendly. The sides are slotted in increments of 25 mm to allow tool holder frames, tool cradles and other components to be adjusted accordingly. Fitted with handle and pair of rubber castors, Ø 200 mm.

Width mm	Depth mm	Height mm	Load capacity kg *	Art. Nr.
1080	692	970	800	30-10400

* with load evenly distributed

Colours: see colour chart at the bottom of the page



2 fixed and
2 swivel braked
Rubber castors



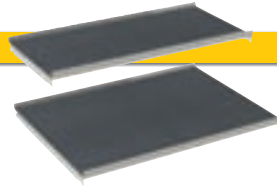
Protection bars



Made of high-quality steel. To be fixed between perforated sides of the trolley. Fixing hardware included.

Width mm	Height mm	Pair Art. Nr.
600	270	30-10428

Colour: Light grey RAL 7035



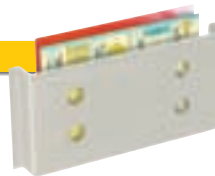
Adjustable shelves

Made of high-quality steel
with rubber mat

To be fixed between the perforated sides of the trolley..

Usable width mm	Usable depth mm	Height mm	Load capacity kg	Art. Nr.
600	305	30	50	30-10407
600	465	30	50	30-10411
600	665	30	50	30-10415

Shelf colour: Light grey RAL 7035 / Rubber mat: Black



Document pocket

Made of high-quality steel

Used to store documents, can be fitted to both perforated sides.

Width mm	Depth mm	Height mm	Size DIN	Art. Nr.
370	46	180	A4	30-10418

Colour: Light grey RAL 7035

Standard colours:

Ral 5012 Ral 6011 Ral 7035



i Load capacity is intended
for evenly distributed
loads



Tool cradles
Made of high-quality steel

To store tool holders. 2-types available (with handle and without handle), fitted to the perforated sides of the trolley using cradle supports.

A Tool cradle

Width mm	Height mm	Depth mm	without Handles Art. Nr.	with Handles Art. Nr.
562	135	155	30-41360	30-41361
562	95	155	30-41362	30-41363

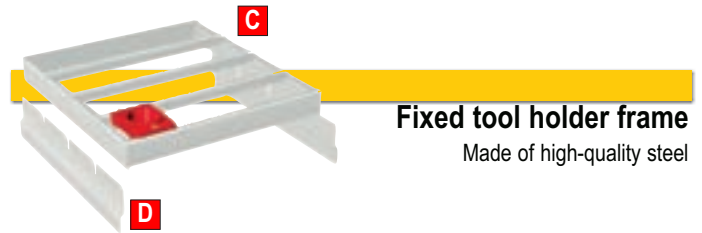
Colour: Light grey RAL 7035

Made of steel. Fitted to the perforated sides of the trolley.

B Cradle support, pair

	Art. Nr.
Horizontal	30-44180
Angled, 20°	30-44181

Colour: Light grey RAL 7035



Fixed tool holder frame
Made of high-quality steel

To be fixed to the perforated sides of the trolley. Fixing hardware included.

C Fixed tool holder frame

Width mm	Depth mm	Height mm	No. of rows	Art. Nr.
584	596	80	4	30-43436

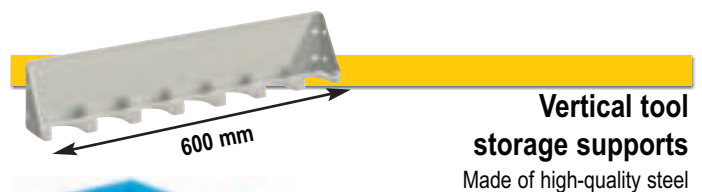
Colour: Light grey RAL 7035

Made of steel. Fitted to the perforated sides of the trolley.

D Frame support, pair

	Art. Nr.
	30-10422

Colour: Light grey RAL 7035



Vertical tool storage supports
Made of high-quality steel



Tool type ISO-SK	Tool type HSK	Collar Ø max. mm	Depth mm	No. of tools	Art. Nr.
30	50	51/36	56	11	33-74311
40	63	63/50	56	9	33-74409
45	80	82/63	72	7	33-74457
50	100	98/80	84	5	33-74505
50	-	112/80	100	5	33-74515

Colour: Light grey RAL 7035



Tool holders see page 179

i All components are supplied with fixings



Series 30

Standard examples:



Size: 1080x692x970 mm	Art. Nr.
without Tool holders	30-10400-20
with 48 Tool holders ISO-SK30	30-10400-23
with 48 Tool holders ISO-SK40	30-10400-24
with 30 Tool holders ISO-SK50	30-10400-25
with 36 Tool holders VDI 40	30-10400-26
with 48 Tool holders HSK 50	30-10400-27
with 36 Tool holders HSK 63	30-10400-28

Fittings:
 2 Adjustable shelves with rubber mat
 1 Fixed tool holder frame 4-rows
 2 Tool cradles and 2 angled supports



Size: 1080x692x970 mm	Art. Nr.
without Tool holders	30-10400-30
with 72 Tool holders ISO-SK30	30-10400-33
with 72 Tool holders ISO-SK40	30-10400-34
with 45 Tool holders ISO-SK50	30-10400-35
with 54 Tool holders VDI 40	30-10400-36
with 72 Tool holders HSK 50	30-10400-37
with 54 Tool holders HSK 63	30-10400-38

Fittings:
 1 Adjustable shelf with rubber mat
 1 Fixed tool holder frame 4-rows
 5 Tool cradles and 5 angled supports



Size: 1080x692x970 mm	Art. Nr.
without Tool holders	30-10400-40
with 80 Tool holders ISO-SK30	30-10400-43
with 80 Tool holders ISO-SK40	30-10400-44
with 50 Tool holders ISO-SK50	30-10400-45
with 60 Tool holders VDI 40	30-10400-46
with 80 Tool holders HSK 50	30-10400-47
with 60 Tool holders HSK 63	30-10400-48

Fittings:
 1 Fixed tool holder frame 4-rows
 4 Tool cradles and 4 angled supports
 2 Tool cradles and 2 horizontal supports



Size: 1080x692x970 mm	Art. Nr.
without Tool holders	30-10400-50
with 80 Tool holders ISO-SK30	30-10400-53
with 80 Tool holders ISO-SK40	30-10400-54
with 50 Tool holders ISO-SK50	30-10400-55
with 60 Tool holders VDI 40	30-10400-56
with 80 Tool holders HSK 50	30-10400-57
with 60 Tool holders HSK 63	30-10400-58

Fittings:
 1 Adjustable shelf with rubber mat
 1 Fixed tool holder frame 4-rows
 6 Tool cradles and 6 angled supports

Standard colours:

Ral 5012 Ral 6011 Ral 7035



Tool holders



Tool type	RED Art. Nr..	No. of tools per tool holder	No. of tools per cradle Art. Nr. 30-41360	No. of tools per frame Art. Nr. 30-43436
ISO-SK 25	30-51025	4	5	20
ISO-SK 30	30-51030	1	8	32
ISO-SK 40	30-51040	1	8	32
ISO-SK 45	30-51045	1	6	24
ISO-SK 50	30-51050	1	5	20
HSK 32	30-51432	1	8	32
HSK 40	30-51440	1	8	32
HSK 50	30-51450	1	8	32
HSK 63	30-51463	1	8	32
HSK 80	30-51480	1	6	24
HSK 100	30-51499	1	5	20
CAPTO C3	30-51603	4	4	16
CAPTO C4	30-51604	1	8	32
CAPTO C5	30-51605	1	8	32
CAPTO C6	30-51606	1	7	28
CAPTO C8	30-51608	1	6	24
VDI 20	30-51120	1	8	32
VDI 30	30-51130	1	8	32
VDI 40	30-51140	1	8	32
VDI 50	30-51150	1	6	24
VDI 60	30-51160	1	5	20
58 mm	30-50058	-	8	32
65 mm	30-50065	-	8	32
75 mm	30-50075	-	7	28
87 mm	30-50087	-	6	24
105 mm	30-50105	-	5	20
120 mm	30-50120	-	4	16