

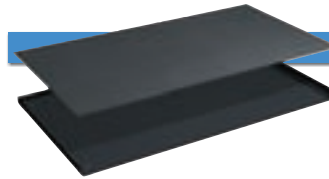


**Cabinet housings**  
with leaf doors

Made of high-quality sheet steel. Housing sides and bases are painted with high resistance products, environmentally friendly. Available in one height only with sides slotted in increments of 25 mm to allow drawers and shelves to be adjusted accordingly. Doors fitted with safety cylinder lock and 2 keys.

Width mm	Depth mm	Height mm	Usable height mm	without Divider Art. Nr.	with Divider Art. Nr.
512	555	1000	850	<b>24-31000</b>	<b>24-31010</b>

Colours: see colour chart at the bottom of the page

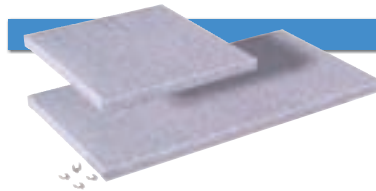


**Upstand raised edges**  
on 3 sides

Made of high-quality sheet steel

Width mm	Depth mm	Height mm	Upstand raised edges on 3-sides Art. Nr.	Smooth rubber mat Art. Nr.
1026	555	20	<b>24-30025</b>	-
1021	550	3	-	<b>24-30022</b>

Colour: Black

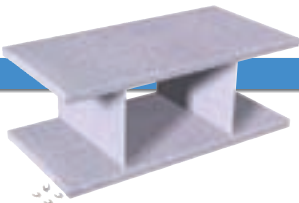


**Adjustable shelves**

Made of high-quality sheet steel

Width mm	Depth mm	Height mm	Load capacity kg	Plain Art. Nr.	Slotted Art. Nr.
486	500	35	70	* <b>24-10034</b>	-
1000	500	35	70	-	<b>24-30036</b>

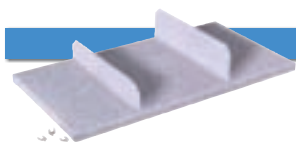
\* only for cabinet with central partition  
Hooks (spare part)-Kit : 16 pieces **52-00006**



**Compartment  
dividing walls**

Made of galvanised steel

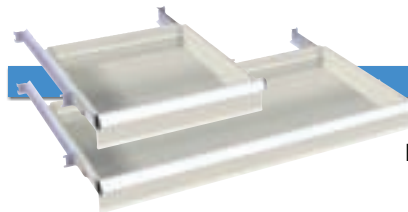
Height between shelves mm	Usable height between shelves mm	Art. Nr.
200	165	<b>52-65020</b>
300	265	<b>52-65030</b>



**Shelf divider**

Made of steel

Length mm	Height mm	Art. Nr.
495	100	<b>52-61050</b>



**Drawers**

Made of high-quality sheet steel

Available in two versions (simple or total extension) with steel roller bearings.

Front height mm	Usable width mm	Usable depth mm	Extension %	Load capacity kg *	Art. Nr.
100 <b>S</b>	486	459	85	50	* <b>24-13100</b>
100 <b>T</b>	486	459	100	50	* <b>24-13101</b>
100 <b>S</b>	918	459	85	50	<b>24-33100</b>
100 <b>T</b>	918	459	100	50	<b>24-33101</b>

\* only for cabinet with central partition

\* with load evenly distributed

Colour: Light grey RAL 7035

**Standard colours:**

Ral 5012 Ral 6011 Ral 7035



**Load capacity is intended  
for evenly distributed  
loads**



**All components are  
supplied with fixings**

## Standard examples:



Size:	Art. Nr.
1026x555x1000 mm	24-31000-01
Fittings:	
1 Adjustable shelf	



Size:	Art. Nr.
1026x555x1000 mm	24-31000-02
Fittings:	
2 Adjustable shelves	



Size:	Art. Nr.
1026x555x1000 mm	24-31000-03
Fittings:	
1 Drawer	
1 Adjustable shelf	

03 13  
100 T 100 S



Size:	Art. Nr.
1026x555x1000 mm	24-31000-04
Fittings:	
1 Drawer	
2 Adjustable shelves	

04 14  
100 T 100 S



Size:	Art. Nr.
1026x555x1000 mm	24-31000-05
Fittings:	
3 Drawers	
1 Adjustable shelf	

05 15  
100 T 100 S  
100 T 100 S  
100 T 100 S



Size:	Art. Nr.
1026x555x1000 mm	24-31000-06
Fittings:	
2 Drawers	

06 16  
100 T 100 S  
100 T 100 S

### Standard colours:

Ral 5012 Ral 6011 Ral 7035





# Series 24

# 1026x555 mm



**07 17**  
 100 T 100 S  
 100 T 100 S

Size:	Art. Nr.
1026x555x1000 mm	24-31000-07
	24-31000-17

Fittings:  
 2 Drawers  
 1 Adjustable shelf



**08 18**  
 100 T 100 S  
 100 T 100 S  
 100 T 100 S

Size:	Art. Nr.
1026x555x1000 mm	24-31000-08
	24-31000-18

Fittings:  
 3 Drawers



### Standard colours:

Ral 5012 Ral 6011 Ral 7035



## Standard examples:



Size:	Art. Nr.
1026x555x1000 mm	24-31010-01
Fittings:	
2 Adjustable shelves	
1 Central partition	



**03 13**  
100 T 100 S

Size:	Art. Nr.
1026x555x1000 mm	24-31010-03
Fittings:	
2 Drawers	
2 Adjustable shelves	
1 Central partition	



**04 14**  
100 T 100 S

Size:	Art. Nr.
1026x555x1000 mm	24-31010-04
Fittings:	
2 Drawers	
4 Adjustable shelves	
1 Central partition	



**06 16**  
100 T 100 S

100 T 100 S

Size:	Art. Nr.
1026x555x1000 mm	24-31010-06
Fittings:	
4 Drawers	
4 Adjustable shelves	
1 Central partition	



**10 20**  
100 T 100 S

100 T 100 S  
100 T 100 S  
100 T 100 S  
100 T 100 S  
100 T 100 S  
100 T 100 S  
100 T 100 S  
100 T 100 S

Size:	Art. Nr.
1026x555x1000 mm	24-31010-10
Fittings:	
8 Drawers	
2 Adjustable shelves	
1 Central partition	

### Standard colours:

Ral 5012 Ral 6011 Ral 7035

