



Hardware Cabinet housings with leaf doors

Made of high-quality sheet steel. Housing sides and bases are welded and painted with high resistance products, environmentally friendly. Available in

different heights with sides slotted in increments of 25 mm to allow drawers to be adjusted accordingly. Doors fitted with safety cylinder lock and 2 keys. Electrical system and 1 mtr. connecting cable included.

Width mm	Depth mm	Height mm	Socket type	Socket type
			Schuko Art. Nr.	UK Art. Nr.
717	725	700	13-30710	13-30716
717	725	800	13-30810	13-30816
717	725	1000	13-31010	13-31016

Different types of sockets are available on request
Colours: see colour chart at the bottom of the page



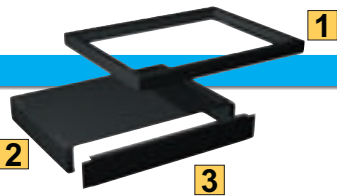
Hardware Cabinet housings with leaf doors and keyboard drawer

Made of high-quality sheet steel. Housing sides and bases are welded and painted with high resistance products, environmentally friendly. Available in one

height only with sides slotted in increments of 25 mm to allow drawers and shelves to be adjusted accordingly. Fitted with central locking system, safety cylinder lock with 2 keys and single drawer opening system. Electrical system and 1 mtr. connecting cable included.

Width mm	Depth mm	Height mm	Socket type	Socket type
			Schuko Art. Nr.	UK Art. Nr.
717	748	1000	13-41010	13-41016

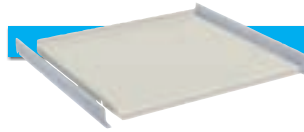
Different types of sockets are available on request
Colours: see colour chart at the bottom of the page



Cabinet bases Made of high-quality steel

	Width mm	Depth mm	Height mm	Art. Nr.
1 Base plinth	717	693	50	05-43605
1 Base plinth	717	693	130	05-43613
2 Pallet base	717	659	100	05-13610
3 Cover plate	717	-	100	05-33610

Colour: Black

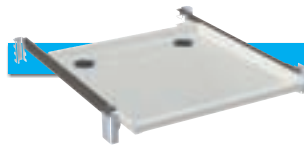


Adjustable shelf

Made of steel. Lateral supports included

Usable width mm	Usable depth mm	Height mm	Load capacity kg	Art. Nr.
658	620	35	70	33-72038

Colour: Light grey RAL 7035

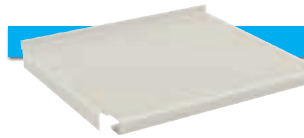


Retractable shelf

Made of high-quality steel

Usable width mm	Usable depth mm	Height mm	Extension %	Load capacity kg	Art. Nr.
612	612	35	85	50	13-33900

Colour: Light grey RAL 7035

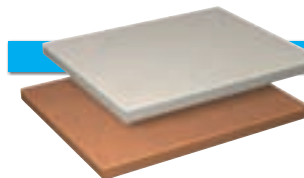


Lower shelf

Made of high-quality steel

Usable width mm	Usable depth mm	Height mm	Load capacity kg	Art. Nr.
660	618	55	50	10-30034

Colour: Light grey RAL 7035

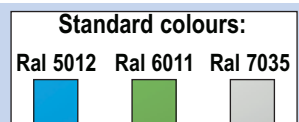


Work surfaces for cabinets

Width mm	Depth mm	Thickness mm	Multiplex Art. Nr.	Plastic laminated Art. Nr.
717	750	40	10-30012	-
717	750	28	-	10-30014

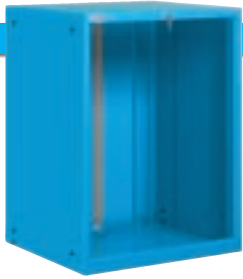
Colour: Plastic laminated Light grey RAL 7035

 Electrical system is supplied with a fan and power trunking with 4 sockets and ON/OFF switch





Series 13



Cabinet housings 36x36 Eh

Made of high-quality sheet steel. Housing sides and bases are welded and painted with high resistance products, environmentally friendly. Available in different heights with sides slotted in increments of 25 mm to allow drawers to be adjusted accordingly. Fitted with central locking system, safety cylinder lock with 2

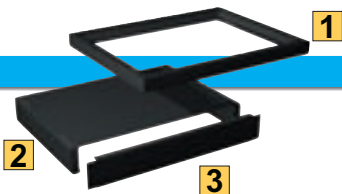
keys and single drawer opening system.

Width mm	Depth mm	Height mm	Usable height mm	Art. Nr.
717	725	700	600	10-30700
717	725	800	700	10-30800
717	725	1000	900	10-31020

Colours: see colour chart at the bottom of the page



Replacement lock with 2 keys
Art. Nr. 06-99110

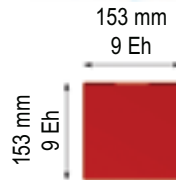
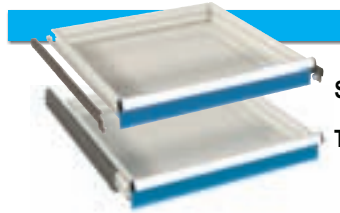


Cabinet bases

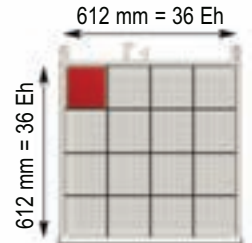
Made of high-quality steel

	Width mm	Depth mm	Height mm	Art. Nr.
1 Base plinth	717	693	50	05-43605
1 Base plinth	717	693	130	05-43613
2 Pallet base	717	659	100	05-13610
3 Cover plate	717	-	100	05-33610

Colour: Black



Drawers 36x36 Eh



Made of high-quality sheet steel.

Available in two versions (simple or total extension) with steel roller bearings. All 4 drawer walls are slotted, for custom sub-division using partitioning material. All drawer handles are equipped with aluminium profiles, end caps and labelling strips.

Front height mm	Usable height mm	Lateral height mm	Load capacity kg *	Art. Nr.
50 S	36	33	60	10-33050
75 S	61	52	80	10-33075
75 T	54	52	200	10-33076
100 S	86	77	100	10-33100
100 T	79	77	200	10-33101
125 S	111	77	100	10-33125
125 T	104	77	200	10-33126
150 S	136	127	100	10-33150
150 T	129	127	200	10-33151
175 T	154	127	200	10-33176
200 S	186	177	100	10-33200
200 T	179	177	200	10-33201
250 T	229	177	200	10-33251
300 S	286	277	100	10-33300
300 T	279	277	200	10-33301
400 T	379	277	200	10-33401

S = simple extension: 85 - 90% extension

T = total extension: 100% extension

* with load evenly distributed and at least one slotted divider in the middle

Colour: Light grey RAL 7035 internal,

for drawer front see colour chart at the bottom of the page



Card insert and cellophane (spare part)

For drawers: 36 Eh

Art. Nr. **06-00365**

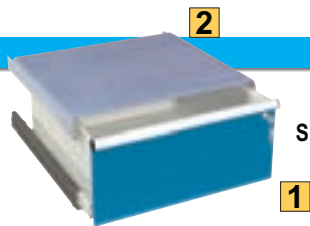
Kit: 30 pieces

Standard colours:

Ral 5012 Ral 6011 Ral 7035



All components are supplied with fixings



Drawer 36x36 Eh with single lock

Made of high-quality steel

1 Drawer with lock

Front height mm	Usable height mm	Lateral height mm	Load capacity kg *	Art. Nr.
300 S	286	277	100	13-33304

S = normal extension: 85 - 90% extension

* with load evenly distributed and at least one slotted divider in the mi

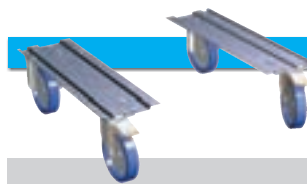
Colour: Light grey RAL 7035 internal,
for drawer front see colour chart at the bottom of the page

2 Cover shelf

Width mm	Depth mm	Art. Nr.
661	693	13-30002

Made of high-quality sheet steel

Lateral supports included



Castor sets, pairs

	Height mm	Pair Art. Nr.
with Nylon castors Ø 100 mm	137	06-37102
with Rubber castors Ø 100 mm	137	06-37101
with Rubber castors Ø 150 mm	194	06-37151

Load capacity: 400kg with load evenly distributed
Supports made of steel

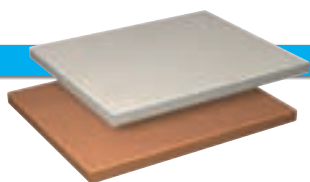


Bases with castors 2 x 36X36 Eh

Size: 1434x725 mm

	Height mm	Art. Nr.
with Nylon castors Ø 100 mm	137	06-37102
with Rubber castors Ø 100 mm	137	06-37101
with Rubber castors Ø 150 mm	194	06-37151

Load capacity: 400kg with load evenly distributed
Colours: see colour chart at the bottom of the page



Work surfaces for cabinets

Width mm	Depth mm	Thickness mm	Multiplex Art. Nr.	Plastic laminated Art. Nr.
1500	750	40	13-30094	13-30084

Colour: Plastic laminated Light grey RAL 7035



2 fixed and
2 swivel braked
Nylon castors



2 fixed and
2 swivel braked
Rubber castors