

Computer cabinets



Cabinet housings

Made of high-quality sheet steel. Housing sides and bases are welded and painted with high resistance products, environmentally friendly. With slotted sides in increments of 25 mm to allow shelves to be adjusted accordingly.

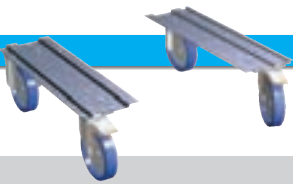
Cabinet features:

- Central locking system to close upper and lower compartment - keyed alike
- Monitor leaf door with Plexiglas® window for visibility
- Monitor compartment usable dims: 600x500x520mm (WxDxH)
- Retractable keyboard drawer with mouse holder
- Built-in ventilator and dust filter to protect equipment from overheating
- 4 standard European sockets with 1 mtr. connecting cable
- Lower compartment closed with leaf doors

Width mm	Depth mm	Height mm	Socket type	Socket type
			Schuko Art. Nr.	UK Art. Nr.
717	595	1625	17-61620	17-61626

Different types of sockets are available on request

Colours: see colour chart at the bottom of the page



Castor sets, pairs

	Height mm	Pair Art. Nr.
with Nylon castors Ø 100 mm	137	06-28102
with Rubber castors Ø 100 mm	137	06-28101
with Rubber castors Ø 150 mm	194	06-28151

Load capacity: 400kg with load evenly distributed

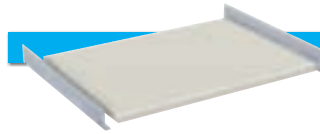
Supports made of steel



2 fixed and
2 swivel braked
Nylon castors



2 fixed and
2 swivel braked
Rubber castors

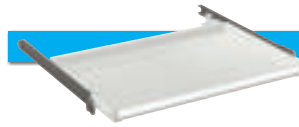


Adjustable shelf

Made of steel. Lateral supports included

Usable width mm	Usable depth mm	Height mm	Load capacity kg	Art. Nr.
658	467	35	70	17-60028

Colour: Light grey RAL 7035

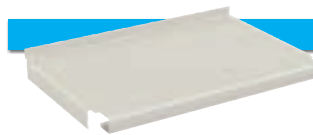


Retractable shelf

Made of high-quality steel

Usable width mm	Usable depth mm	Height mm	Extension %	Load capacity kg	Art. Nr.
612	459	35	85	50	17-63900

Colour: Light grey RAL 7035



Lower shelf

Made of high-quality steel

Usable width mm	Usable depth mm	Height mm	Load capacity kg	Art. Nr.
660	467	55	50	17-60034

Colour: Light grey RAL 7035



Cabinet bases

Made of high-quality steel

	Width mm	Depth mm	Height mm	Art. Nr.
1 Base plinth	717	540	50	05-43505
1 Base plinth	717	540	130	05-43513
2 Pallet base	717	506	100	05-13510
3 Cover plate	717	-	100	05-33610

Colour: Black

i All components are supplied with fixings

i Load capacity is intended for evenly distributed loads

Standard colours:

Ral 5012	Ral 6011	Ral 7035



Series 17

Standard examples:

Static computer cabinets:



AS

Size: 717x595x1625 mm

Socket type	Art. Nr.
Schuko	17-61620-01

Fittings:

- 1 Adjustable shelf
- 1 Lower shelf



AS

RS S

Size: 717x595x1625 mm

Socket type	Art. Nr.
Schuko	17-61620-02

Fittings:

- 1 Adjustable shelf
- 1 Retractable shelf

Mobile computer cabinets:



AS

Size: 717x595x1762 mm

Socket type	Art. Nr.
Schuko	17-61620-05

Fittings:

- 1 Adjustable shelf
- 1 Lower shelf
- 2 fixed and 2 swivel braked,
Rubber castors, Ø 100 mm



AS

RS S

Size: 717x595x1762 mm

Socket type	Art. Nr.
Schuko	17-61620-06

Fittings:

- 1 Adjustable shelf
- 1 Retractable shelf
- 2 fixed and 2 swivel braked,
Rubber castors, Ø 100 mm

Standard colours:

Ral 5012 Ral 6011 Ral 7035

