

# Accessories for Quality Stations:

## Quality Stations with roller shutter door

### Worktops



### Basic Hardware Cabinet



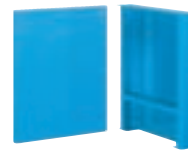
### Hardware Cabinet with Keyboard Drawer



### Standard Drawer Cabinet



### Closed leg



### Retractable shelf



### Adjustable shelf



### Lower shelf



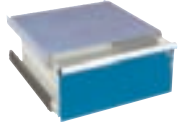
### Drawer-S



### Drawer-T



### Drawer with single lock



### Supports with Castors



### Cabinet Bases





# Series 13



**Roller shutter cabinets for Quality Stations**

Made of high-quality sheet steel, painted with high resistance products, environmentally friendly. To be fitted to the cabinets and/or closed legs, consisting of robust metal housing and plastic horizontal profiles with hand grip for easy operation. Sides are slotted to allow shelves to be adjusted accordingly. Equipped with safety cylinder lock with 2 keys.

Width mm	Depth mm	Height mm	Plastic laminated Art. Nr.	Multiplex Art. Nr.
1431	725	1200	<b>13-50210</b>	<b>13-50220</b>

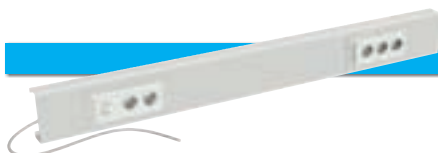
Colours: see colour chart at the bottom of the page



**Adjustable shelf**  
Made of high-quality steel

Usable width mm	Usable depth mm	Height mm	Load capacity kg	Art. Nr.
1379	300	35	70	<b>13-50232</b>

Colour: Light grey RAL 7035



**Power trunking**  
Made of high-quality steel

Width mm	Depth mm	Height mm	Socket type	
			Schuko Art. Nr.	UK Art. Nr.
1379	55	150	<b>13-03130</b>	<b>13-03136</b>

With 5 sockets and ON/OFF switch

Different types of sockets are available on request

Colour: Light grey RAL 7035



**Closed legs  
Back panels**  
Made of high-quality steel

**1 Closed leg**

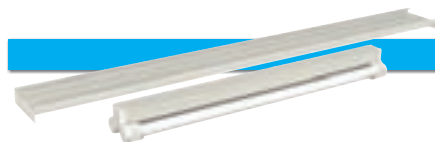
Height mm	Width mm	Depth mm	Art. Nr.
700	80	725	<b>13-10700</b>
800	80	725	<b>13-10800</b>
900	80	725	<b>13-10900</b>
1000	80	725	<b>13-11000</b>

Colours: see colour chart at the bottom of the page

**2 Back panel**

Height mm	Width mm	Depth mm	Art. Nr.
700	637	30	<b>13-10710</b>
800	637	30	<b>13-10810</b>
900	637	30	<b>13-10910</b>
1000	637	30	<b>13-11010</b>

Colours: see colour chart at the bottom of the page



**Overhead light**  
Supports included

Width mm	Depth mm	Watt	Art. Nr.
1379	150	2x36 W	<b>13-30012</b>

Power cable not supplied

Colour: Light grey RAL 7035

**Standard colours:**

Ral 5012 Ral 6011 Ral 7035



**i** Load capacity is intended for evenly distributed loads

**i** All components are supplied with fixings



### Hardware Cabinet housings with leaf doors

Made of high-quality sheet steel. Housing sides and bases are welded and painted with high resistance products, environmentally friendly. Available in

different heights with sides slotted in increments of 25 mm to allow drawers to be adjusted accordingly. Doors fitted with safety cylinder lock and 2 keys. Electrical system and 1 mtr. connecting cable included.

Width mm	Depth mm	Height mm	Socket type	Socket type
			Schuko Art. Nr.	UK Art. Nr.
717	725	700	<b>13-30710</b>	<b>13-30716</b>
717	725	800	<b>13-30810</b>	<b>13-30816</b>
717	725	1000	<b>13-31010</b>	<b>13-31016</b>

Different types of sockets are available on request  
Colours: see colour chart at the bottom of the page



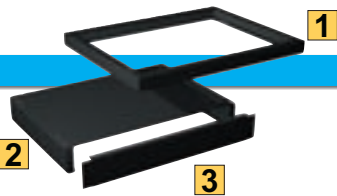
### Hardware Cabinet housings with leaf doors and keyboard drawer

Made of high-quality sheet steel. Housing sides and bases are welded and painted with high resistance products, environmentally friendly. Available in one

height only with sides slotted in increments of 25 mm to allow drawers and shelves to be adjusted accordingly. Fitted with central locking system, safety cylinder lock with 2 keys and single drawer opening system. Electrical system and 1 mtr. connecting cable included.

Width mm	Depth mm	Height mm	Socket type	Socket type
			Schuko Art. Nr.	UK Art. Nr.
717	748	1000	<b>13-41010</b>	<b>13-41016</b>

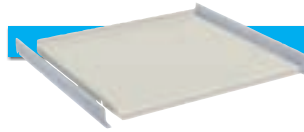
Different types of sockets are available on request  
Colours: see colour chart at the bottom of the page



### Cabinet bases Made of high-quality steel

	Width mm	Depth mm	Height mm	Art. Nr.
<b>1</b> Base plinth	717	693	50	<b>05-43605</b>
<b>1</b> Base plinth	717	693	130	<b>05-43613</b>
<b>2</b> Pallet base	717	659	100	<b>05-13610</b>
<b>3</b> Cover plate	717	-	100	<b>05-33610</b>

Colour: Black

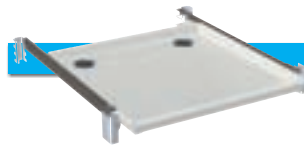


### Adjustable shelf

Made of steel. Lateral supports included

Usable width mm	Usable depth mm	Height mm	Load capacity kg	Art. Nr.
658	620	35	70	<b>33-72038</b>

Colour: Light grey RAL 7035

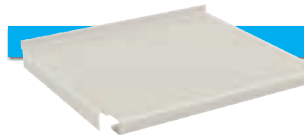


### Retractable shelf

Made of high-quality steel

Usable width mm	Usable depth mm	Height mm	Extension %	Load capacity kg	Art. Nr.
612	612	35	85	50	<b>13-33900</b>

Colour: Light grey RAL 7035

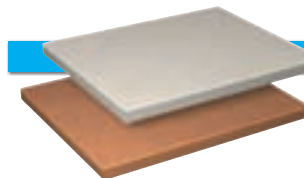


### Lower shelf

Made of high-quality steel

Usable width mm	Usable depth mm	Height mm	Load capacity kg	Art. Nr.
660	618	55	50	<b>10-30034</b>

Colour: Light grey RAL 7035

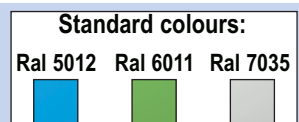


### Work surfaces for cabinets

Width mm	Depth mm	Thickness mm	Multiplex Art. Nr.	Plastic laminated Art. Nr.
717	750	40	<b>10-30012</b>	-
717	750	28	-	<b>10-30014</b>

Colour: Plastic laminated Light grey RAL 7035

 Electrical system is supplied with a fan and power trunking with 4 sockets and ON/OFF switch





# Series 13



## Cabinet housings 36x36 Eh

Made of high-quality sheet steel. Housing sides and bases are welded and painted with high resistance products, environmentally friendly. Available in different heights with sides slotted in increments of 25 mm to allow drawers to be adjusted accordingly. Fitted with central locking system, safety cylinder lock with 2

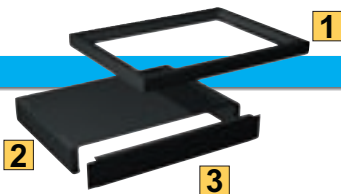
keys and single drawer opening system.

Width mm	Depth mm	Height mm	Usable height mm	Art. Nr.
717	725	700	600	<b>10-30700</b>
717	725	800	700	<b>10-30800</b>
717	725	1000	900	<b>10-31020</b>

Colours: see colour chart at the bottom of the page



**Replacement lock with 2 keys**  
Art. Nr. 06-99110

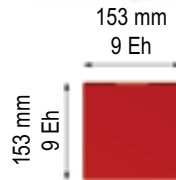
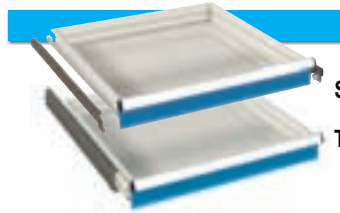


## Cabinet bases

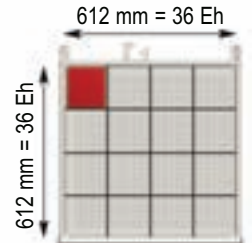
Made of high-quality steel

	Width mm	Depth mm	Height mm	Art. Nr.
<b>1</b> Base plinth	717	693	50	<b>05-43605</b>
<b>1</b> Base plinth	717	693	130	<b>05-43613</b>
<b>2</b> Pallet base	717	659	100	<b>05-13610</b>
<b>3</b> Cover plate	717	-	100	<b>05-33610</b>

Colour: Black



## Drawers 36x36 Eh



Made of high-quality sheet steel.

Available in two versions (simple or total extension) with steel roller bearings. All 4 drawer walls are slotted, for custom sub-division using partitioning material. All drawer handles are equipped with aluminium profiles, end caps and labelling strips.

Front height mm	Usable height mm	Lateral height mm	Load capacity kg *	Art. Nr.
50 S	36	33	60	<b>10-33050</b>
75 S	61	52	80	<b>10-33075</b>
75 T	54	52	200	<b>10-33076</b>
100 S	86	77	100	<b>10-33100</b>
100 T	79	77	200	<b>10-33101</b>
125 S	111	77	100	<b>10-33125</b>
125 T	104	77	200	<b>10-33126</b>
150 S	136	127	100	<b>10-33150</b>
150 T	129	127	200	<b>10-33151</b>
175 T	154	127	200	<b>10-33176</b>
200 S	186	177	100	<b>10-33200</b>
200 T	179	177	200	<b>10-33201</b>
250 T	229	177	200	<b>10-33251</b>
300 S	286	277	100	<b>10-33300</b>
300 T	279	277	200	<b>10-33301</b>
400 T	379	277	200	<b>10-33401</b>

S = simple extension: 85 - 90% extension

T = total extension: 100% extension

\* with load evenly distributed and at least one slotted divider in the middle

Colour: Light grey RAL 7035 internal,

for drawer front see colour chart at the bottom of the page



### Card insert and cellophane (spare part)

For drawers: 36 Eh

Art. Nr. **06-00365**

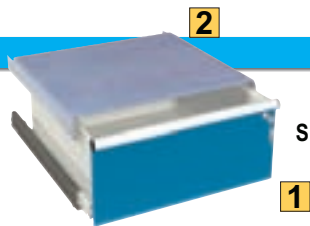
Kit: 30 pieces

### Standard colours:

Ral 5012 Ral 6011 Ral 7035



All components are supplied with fixings



**Drawer 36x36 Eh with single lock**  
Made of high-quality steel

**1 Drawer with lock**

Front height mm	Usable height mm	Lateral height mm	Load capacity kg *	Art. Nr.
300 <b>S</b>	286	277	100	<b>13-33304</b>

**S** = normal extension: 85 - 90% extension

\* with load evenly distributed and at least one slotted divider in the mi

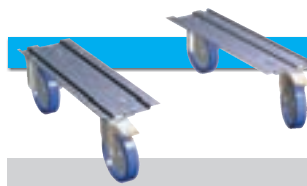
Colour: Light grey RAL 7035 internal,  
for drawer front see colour chart at the bottom of the page

**2 Cover shelf**

Width mm	Depth mm	Art. Nr.
661	693	<b>13-30002</b>

Made of high-quality sheet steel

Lateral supports included



**Castor sets, pairs**

	Height mm	Pair Art. Nr.
with Nylon castors Ø 100 mm	137	<b>06-37102</b>
with Rubber castors Ø 100 mm	137	<b>06-37101</b>
with Rubber castors Ø 150 mm	194	<b>06-37151</b>

Load capacity: 400kg with load evenly distributed  
Supports made of steel

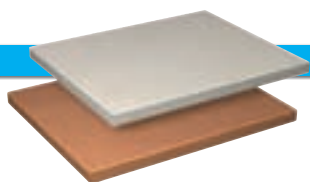


**Bases with castors**  
**2 x 36X36 Eh**

Size: 1434x725 mm

	Height mm	Art. Nr.
with Nylon castors Ø 100 mm	137	<b>06-37102</b>
with Rubber castors Ø 100 mm	137	<b>06-37101</b>
with Rubber castors Ø 150 mm	194	<b>06-37151</b>

Load capacity: 400kg with load evenly distributed  
Colours: see colour chart at the bottom of the page



**Work surfaces for cabinets**

Width mm	Depth mm	Thickness mm	Multiplex Art. Nr.	Plastic laminated Art. Nr.
1500	750	40	<b>13-30094</b>	<b>13-30084</b>

Colour: Plastic laminated Light grey RAL 7035



2 fixed and  
2 swivel braked  
**Nylon** castors



2 fixed and  
2 swivel braked  
**Rubber** castors



# Series 13



Size: 1500x750x840 mm h

Socket type	Plastic laminated Art. Nr.	Multiplex Art. Nr.
<b>Schuko</b>	<b>13-20810-01</b>	<b>13-20810-11</b>

**Fittings:**

- 1 Worktop 40 mm thick
- 1 Hardware Cabinet with: electrical system , 1 retractable shelf and 1 fixed lower shelf
- 1 Closed leg h 800 mm
- 1 Back panel



100 T  
150 T  
150 T  
300 T

Size: 1500x750x840 mm h

Socket type	Plastic laminated Art. Nr.	Multiplex Art. Nr.
<b>Schuko</b>	<b>13-20810-04</b>	<b>13-20810-14</b>

**Fittings:**

- 1 Worktop 40 mm thick
- 1 Hardware Cabinet with: electrical system , 1 retractable shelf and 1 fixed lower shelf
- 1 Cabinet 36x36 Eh with 4 drawers



Size: 1434x725x2000/840 mm h

Socket type	Plastic laminated Art. Nr.	Multiplex Art. Nr.
<b>Schuko</b>	<b>13-90810-01</b>	<b>13-90810-11</b>

**Fittings:**

- 1 Roller shutter cabinet with: 1 adjustable shelf and 1 worktop 40 mm thick
- 1 Hardware Cabinet with: electrical system , 1 retractable shelf and 1 fixed lower shelf
- 1 Closed leg h 800 mm
- 1 Back panel



100 T  
150 T  
150 T  
300 T

Size: 1434x725x2000/840 mm h

Socket type	Plastic laminated Art. Nr.	Multiplex Art. Nr.
<b>Schuko</b>	<b>13-90800-04</b>	<b>13-90800-14</b>

**Fittings:**

- 1 Roller shutter cabinet with: 1 adjustable shelf and 1 worktop 40 mm thick
- 1 Cabinet 36x36 Eh with 4 drawers
- 1 Closed leg h 800 mm
- 1 Back panel

**Standard colours:**

Ral 5012 Ral 6011 Ral 7035



Standard examples are supplied assembled

Standard examples:



Size: 1500x750x1040 mm h

Socket type	Plastic laminated Art. Nr.	Multiplex Art. Nr.
Schuko	13-21010-01	13-21010-11

Fittings:

- 1 Worktop 40 mm thick
- 1 Hardware Cabinet with keyboard drawer: electrical system, 1 retractable shelf and 1 fixed lower shelf
- 1 Closed leg h 1000 mm
- 1 Back panel



Size: 1500x750x1040 mm h

Socket type	Plastic laminated Art. Nr.	Multiplex Art. Nr.
Schuko	13-21010-04	13-21010-14

Fittings:

- 1 Worktop 40 mm thick
- 1 Hardware Cabinet with keyboard drawer: electrical system, 1 retractable shelf and 1 fixed lower shelf
- 1 Cabinet 36x36 Eh with 7 drawers



Size: 1434x725x2200/1040 mm h

Socket type	Plastic laminated Art. Nr.	Multiplex Art. Nr.
Schuko	13-91010-01	13-91010-11

Fittings:

- 1 Roller shutter cabinet with: 1 adjustable shelf and 1 worktop 40 mm thick
- 1 Hardware Cabinet with keyboard drawer: electrical system, 1 retractable shelf and 1 fixed lower shelf
- 1 Closed leg h 1000 mm
- 1 Back panel



Size: 1434x725x2200/1040 mm h

Socket type	Plastic laminated Art. Nr.	Multiplex Art. Nr.
Schuko	13-91010-04	13-91010-14

Fittings:

- 1 Roller shutter cabinet with: 1 adjustable shelf and 1 worktop 40 mm thick
- 1 Hardware Cabinet with: electrical system, 1 retractable shelf and 1 fixed lower shelf
- 1 Cabinet 36x36 Eh with 3 drawers with single lock

**i** Electrical system is supplied with a fan and power trunking with 4 standard European sockets Schuko (230V) and ON/OFF switch

Standard colours:

Ral 5012	Ral 6011	Ral 7035