

Partitioning Material

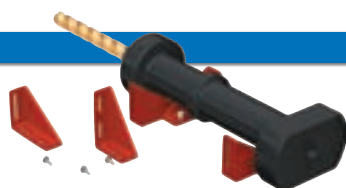


Cutter holders

Made of shock-resistant synthetic material

To be bolted to the perforated drawer base.
Fixings included.
Colour: RED

Ø mm	Inch	Height mm	Ø Tool bore mm	Art. Nr.
15,5	-	26	16	04-30416
21,5	-	26	22	04-30422
25	1	26	25,5	04-30425
26,5	-	26	27	04-30427
31,2	-	26	32	04-30432
37,5	1 1/2	26	38	04-30438
39,5	-	26	40	04-30440
49,5	-	26	50	04-30450

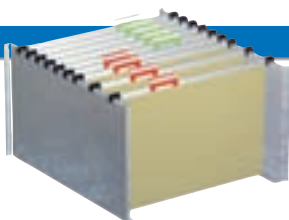


Arbor holders, pairs

Made of shock-resistant synthetic material

To store larger tools horizontally. To be bolted to the perforated drawer base.
Fixings included.
Colour: RED

Width mm	Depth mm	Height mm	Art. Nr.
25	75	52	04-30470

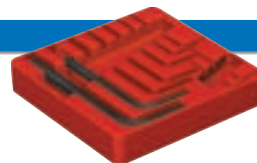


Suspension frames, pairs

Made of galvanised steel

To store files size DIN A4.
To be fitted into a 300mm drawer front height only.

For drawer	No. of pairs for drawer	For drawer	Length mm	Height mm	Art. Nr.
27 Eh	1	27 Eh	457	260	04-30704
36 Eh	1	36 Eh	610	260	04-30706
45 Eh	1				
54 Eh	2				
64 Eh	2				
78 Eh	3				

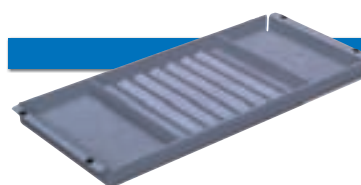


Allen key holder

Made of shock-resistant synthetic material

To store allen keys from sizes 1.5 to 10 mm.
Colour: RED

Width mm	Width Eh	Depth mm	Depth Eh	Height mm	Art. Nr.
148	9	148	9	26	04-30474



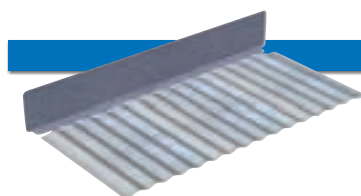
Sliding tray

Made of galvanised steel

To be fitted into 27 Eh drawers only.
To store arbors, punches, etc.



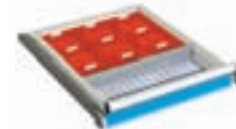
Width mm	Depth mm	Height mm	Art. Nr.
470	200	30	04-30760



Corrugated insert

Made of galvanised steel

Fitted only into 27 Eh drawers and positioned with plain partitions. To store arbors, punches, etc.



Width mm	Depth mm	No. of slots	Art. Nr.
457	203	17	04-30764
Plain partition 27 Eh			03-05027